



Weekly Construction Progress Report

Morningside Elementary School

Week Ending: 08/27/2021

THIS WEEK

- Sitework continues
 - Storm drainage piping installation
 - Building pad grading
 - Underground storm pond installation
- Electrical demolition continues throughout building
- Mechanical equipment relocation continues
- Electrical rough-in continues throughout building
- Plumbing rough-in continues throughout building
- Ductwork installation continues
- Gas piping rough-in continues
- Interior demolition continues
- Parking garage steel begins
- Interior framing at Area B
- Sheetrock begins in area A
- Site demolition begins at cafeteria addition

NEXT WEEK: 08.30.21 – 09.03.21

- Sitework continues
 - Storm drainage piping installation
 - Building pad grading
 - Underground storm pond installation complete
- Electrical demolition continues throughout building
- Mechanical equipment relocation continues
- Electrical rough-in continues throughout building
- Plumbing rough-in continues throughout building
- Ductwork installation continues
- Gas piping rough-in continues
- Interior demolition continues
- Parking garage steel continues
- Sheetrock finishing begins in area A
- Interior framing at Area B

BUDGET

Construction Budget

\$17,600,000.00

Budget Status

\$2,395,124.47

Completed By:
Ben Fairchild

PARRISH
CONSTRUCTION GROUP

Photo/Activity Updates

Interior framing at Area A



Drywall at Area A



Photo/Activity Updates

Underground storm pond installation

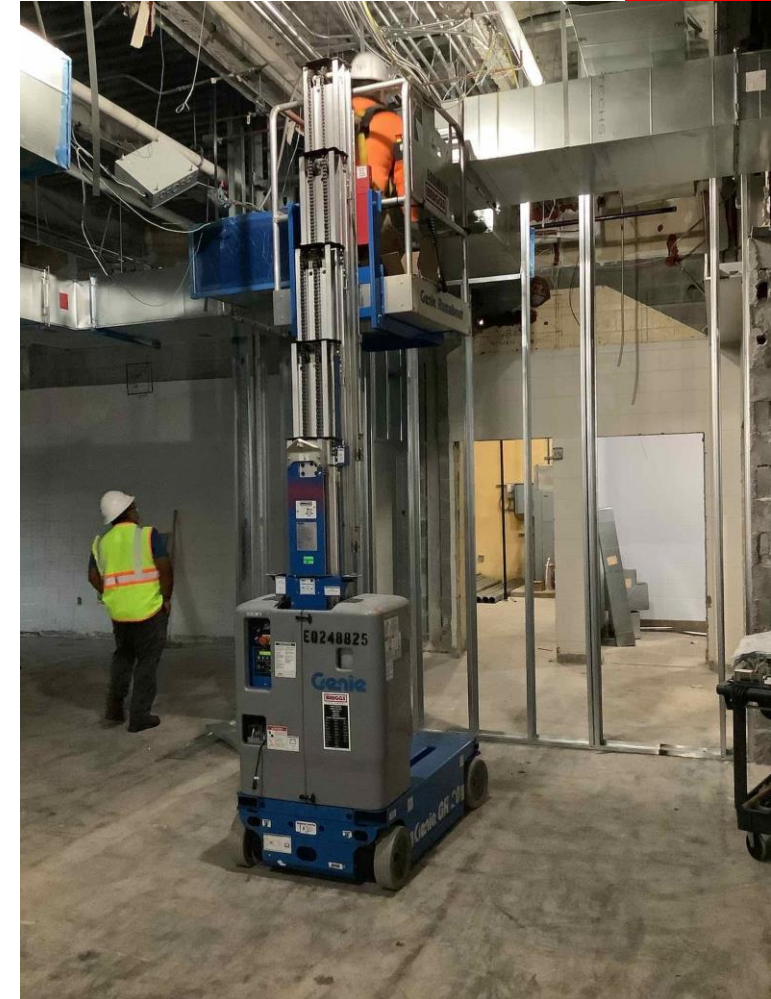


Underground storm pond installation



Photo/Activity Updates

Site demolition at cafeteria addition



Duct installation in cafeteria

